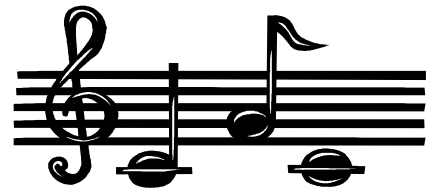


Crescendo Club



Centennial High School Band Backers

The CHS Band Backers was founded by band parents to support the band program (wind ensemble, concert band, jazz band, and marching band) at Centennial High School in many ways. Our fund raising activities provide support and assistance in the form of new instruments (a significant portion of the Band Backer budget), instrument repair, sheet music subscriptions, assistance at concerts, marching band events, field trips, guest artists, and adjudications.

Please note that for each \$25 donation and increment thereof, you will be given a pass to CHS Music Department concerts. For example with a \$100 donation you will receive 4 passes. Each pass is good throughout the school year so please keep your complimentary passes and use them all year long! In addition to the passes, your name is published in each concert program throughout the year. Donations received by Nov. 30 will be acknowledged in the Winter Concert programs. Please let us know if you would prefer not to be listed in the program.

All donations are tax deductible since CHS Band Backers is an approved 501(c)(3) charitable organization. Many corporations also provide matching funds for their employee contributions. If your employer has such a program, we would greatly appreciate the participation. We welcome all corporate (including matching), personal and family donations. If you would like to contribute, kindly complete the form below and return it to school with your student or mail to:

CHS Band Backers
4300 Centennial Lane
Ellicott City, MD 21042

Please be sure to **indicate your name as you wish it to appear in the program.**

Thank you for your support!

Enclosed is my donation for \$_____.
Make checks payable to **CHS Band Backers Inc.**

Name (as you want it to appear in the concert program)

Address

City

State

Zip

Phone

Please do not list my name in the concert program.

Please note: In order to process your generous contributions accurately, we ask that you mail this form and your donation to the CHS Band Backers or drop it off at the school's main office. Thanks.